

News

On this website, you have seen pictures of bright and smiling students in crisp school uniforms. These pictures represent the positive journey students have begun. Currently, enrollment at BSD has grown to 110 because of the positive reputation the school has earned. The down side of this story is that students also face daily hardships because buildings are no longer adequate. For example, there is one water tap within the school compound, but it only functions when the local water supply is turned on. Invariably, the children take turns walking to other sources of water and carrying it back in buckets for all their daily needs: drinking, cooking, washing clothes, bathing, and toileting.

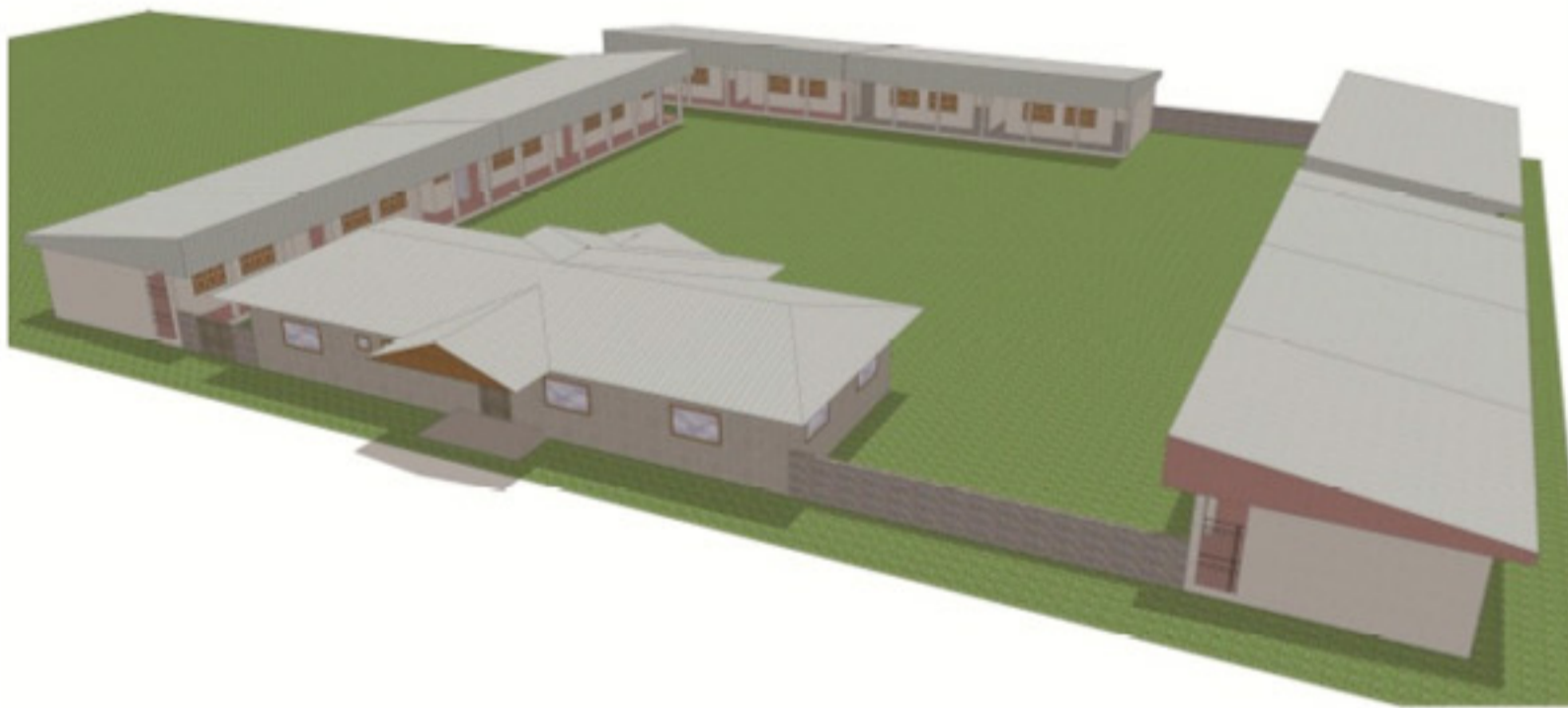


There is very limited space for playing within the school compound. Security walls show their age. Paint and plaster peel from many of the classroom walls. There is one cooking station, essentially a small, open grill where large pots of food must be cooked sequentially to serve children their meals. At night, mats are spread out in classrooms that double as dormitories. Seeing only the bright and positive expressions of the children masks the fact they deserve much better. Photos on this page give a more realistic picture of what is lacking.

The time is long overdue for BSD to realize a major dream—building its own school complex. Thanks to the Johnson Scholarship Foundation, headquartered in Florida, a tract of land has already been purchased. Older students at BSD have worked Saturday mornings to begin clearing the land and have used a portion to plant vegetables. The school has drawn up blueprints and developed a detailed list of materials needed for construction. The first phase includes classroom buildings and an administration building that form a square and an inner courtyard. The architect's drawing illustrates spaciousness and a design that provides security for the students:



3-D Plans of the Buea School for the Deaf's Classrooms and Administration Buildings (Phase 1 Projects)



Friends of the Buea School for the Deaf want to join BSD in the effort to realize its dream. We are making an appeal to see that educational opportunities for deaf children expand at BSD. Estimates for the buildings have been carefully drawn up. The range of costs allows for donations large and small.

You are familiar with the idea of a registry for a wedding or for a baby shower. Below, you will find a registry (partial) of building materials and tasks needed to construct the school. **A donor has notified us of a grant to match donations made for construction of the school. This will double your donation!!** We ask that you be generous in deciding what you can contribute to make BSD's new school a reality.

Select construction requirements	Number needed	Cost per unit
Removal of tree stumps	2 areas*	\$47.00/ea.
Excavating for buildings	2 areas*	\$310.00/ea.
Laying of foundation	2 areas*	\$698.00/ea
Cement for molding blocks	360 bags per area*	\$12.00/ea.
Sand	5 loads	\$73.00/ea.
Gravel	15 loads	\$210.00/ea
Drums for water	6	\$21.00/ea.
Plywood	162 sheets	\$9.30/ea.
Nails	50 packets	\$12.00/ea.
Tie beams & king poles (roofing)	115 parts	\$3.50/ea.
Rafters	125	\$3.50/ea.
Purlins	200	\$2.33/ea.
Strut braces	90	\$2.33/ea.
Roofing sheets (corrugated aluminum)	210	\$12.80/ea.
Zinc fascia	77	\$6.00/ea.
Roofing labor, administration bldg.	labor	\$1,163.00
Louver frames for windows	30	\$12.00/ea.
Louver blades for windows	350	\$1.63/ea.
Wood for doors	38 sized pieces	\$14.00/ea.
Iron doors	4	\$151.00/ea.
Hooks for doors and windows	24	\$20.00 total
Plastering, classroom building	1	\$465.00
Whitewash for admin. and classrooms	8 drums	\$14.00 ea.
Labor, painting classroom block	labor	\$348.00
Paint/colorant for classroom block	10 units	\$101.45 ea.
Painting, admin. Building,	labor	\$833.00
Electrical wiring for classroom block	materials and labor	\$765.00
Electrical wiring for admin. building	materials and labor	\$2,314
Electrical generator	1 unit	\$9,035
Other materials for electrification	materials and labor	\$2,297
Toilet blocks between classroom areas	4 blocks of toilets	\$2,430 per block
Administration building plumbing	materials and labor	\$1,442.00
Septic system, administration building	materials and labor	\$1,003.00
Floor tiling in administration building	labor	\$1,163.00
Water system for overall school site	materials and labor	\$5,942.00

* classroom block/administration building